

See discussions, stats, and author profiles for this publication at: <https://www.researchgate.net/publication/303669048>

Joint dynamic species distribution models: a tool for community ordination and spatio-temporal monitoring: Joint...

Article · May 2016

DOI: 10.1111/geb.12464

CITATION

1

READS

456

7 authors, including:



James T Thorson

National Marine Fisheries Service

95 PUBLICATIONS 872 CITATIONS

SEE PROFILE



Mark D Scheuerell

National Oceanic and Atmospheric Administr...

75 PUBLICATIONS 2,388 CITATIONS

SEE PROFILE



Cody Szuwalski

University of California, Santa Barbara

30 PUBLICATIONS 238 CITATIONS

SEE PROFILE



Elise F Zipkin

Michigan State University

56 PUBLICATIONS 822 CITATIONS

SEE PROFILE

Some of the authors of this publication are also working on these related projects:



Estimating Common Growth Patterns in Juvenile Chinook Salmon (*Oncorhynchus tshawytscha*) from Diverse Genetic Stocks and a Large Spatial Extent [View project](#)



Assessment of changes in stock-recruitment relationships [View project](#)



Joint dynamic species distribution models: a tool for community ordination and spatio-temporal monitoring

James T. Thorson^{1*}, James N. Ianelli², Elise A. Larsen³, Leslie Ries⁴, Mark D. Scheuerell⁵, Cody Szuwalski^{6,7} and Elise F. Zipkin^{8,9}

¹Fisheries Resource Assessment and Monitoring Division, Northwest Fisheries Science Center, National Marine Fisheries Service, NOAA, Seattle, WA, USA, ²Resource Ecology and Fisheries Management Division, Alaska Fisheries Science Center, National Marine Fisheries Service, NOAA, Seattle, WA, USA, ³National Socio-environmental Synthesis Center, Annapolis, MD, USA, ⁴Department of Biology, Georgetown University, Washington, DC, USA, ⁵Fish Ecology Division, Northwest Fisheries Science Center, National Marine Fisheries Service, NOAA, Seattle, WA, USA, ⁶Sustainable Fisheries Group, Bren School of Environmental and Resource Management, University of California, Santa Barbara, CA, USA, ⁷Marine Science Institute, University of California, Santa Barbara, CA, USA, ⁸Department of Integrative Biology, Michigan State University, East Lansing, MI, USA, ⁹Ecology, Evolutionary Biology, and Behavior Program, Michigan State University, East Lansing, MI, USA

*Correspondence: James T. Thorson, Fisheries Resource Assessment and Monitoring Division, Northwest Fisheries Science Center, National Marine Fisheries Service, NOAA, 2725 Montlake Blvd E, Seattle, WA 98112. E-mail: James.Thorson@noaa.gov

ABSTRACT

Aim Spatial analysis of the distribution and density of species is of continuing interest within theoretical and applied ecology. Species distribution models (SDMs) are being increasingly used to analyse count, presence–absence and presence-only data sets. There is a growing literature on dynamic SDMs (which incorporate temporal variation in species distribution), joint SDMs (which simultaneously analyse the correlated distribution of multiple species) and geostatistical models (which account for similarity between nearby sites caused by unobserved covariates). However, no previous study has combined all three attributes within a single framework.

Innovation We develop spatial dynamic factor analysis for use as a ‘joint, dynamic SDM’ (JDSDM), which uses geostatistical methods to account for spatial similarity when estimating one or more ‘factors’. Each factor evolves over time following a density-dependent (Gompertz) process, and the log-density of each species is approximated as a linear combination of different factors. We demonstrate a JDSDM using two multispecies case studies (an annual survey of bottom-associated species in the Bering Sea and a seasonal survey of butterfly density in the continental USA), and also provide our code publicly as an R package.

Main conclusions Case study applications show that JDSDMs can be used for species ordination, i.e. showing that dynamics for butterfly species within the same genus are significantly more correlated than for species from different genera. We also demonstrate how JDSDMs can rapidly identify dominant patterns in community dynamics, including the decline and recovery of several Bering Sea fishes since 2008, and the ‘flight curves’ typical of early or late-emerging butterflies. We conclude by suggesting future research that could incorporate phylogenetic relatedness or functional similarity, and propose that our approach could be used to monitor community dynamics at large spatial and temporal scales.

Keywords

Bering Sea, dynamic factor analysis, flight curve, geostatistics, spatio-temporal model, species co-occurrence, species distribution model, species ordination.

INTRODUCTION

Understanding the spatial distribution of species is a central concern in ecology, and is necessary for evaluating spatial protections for threatened species, interpreting the impacts of

abiotic and biotic factors on species distribution, tracking the spread of invasive species and interpreting the impacts of climate on species and communities (Hooten & Wikle, 2010; Rassweiler *et al.*, 2014). Species distribution models (SDMs)

are increasingly used to approximate the distribution of a given species as a function of measured environmental variables and unobserved spatial covariation (Elith & Leathwick, 2009; Harris, 2015).

SDMs typically model either the distribution (presence–absence) or density of a given species as a function of measured environmental variables, while sometimes accounting for spatial covariation caused by geographical proximity. However, the relationship between abiotic habitat and species distribution may vary over time due to species invasions, climate shifts and many other factors (Pearman *et al.*, 2008). Biotic interactions and physical access to new habitats (e.g. changes in dispersal caused by changing climate or the removal of dams on rivers) may also cause temporal changes in distribution (Soberón, 2007). This concern has increased interest in modelling temporal variation in species distribution via dynamic SDMs (DeVisser *et al.*, 2010; Merow *et al.*, 2011), where environmental linkages or residual spatial variation is allowed to vary over time.

By estimating the presence or density of species across space, SDMs are also a natural building block for understanding community dynamics. However, stacking estimates of the distribution or density for individual species from multiple SDMs and subsequently using these as summaries of community distribution is likely to yield biased estimates of community-level patterns (Clark *et al.*, 2014, and references therein). Joint SDMs are an alternative procedure for simultaneously modelling the distribution of multiple species within a community, and were originally developed to estimate total species richness when accounting for imperfect species detection (Dorazio & Royle, 2005). Joint SDMs may also yield more accurate estimates of occupancy or density for rare or otherwise infrequently encountered species (Dorazio *et al.*, 2006; Ovaskainen & Soininen, 2011; Rota *et al.*, 2015; Thorson *et al.*, 2015a). For these reasons, interest has increased in developing joint SDMs that include covariation in occurrence or density among species, either at the landscape or the sample level, while also accounting for standard habitat predictors (Latimer *et al.*, 2009; Ovaskainen *et al.*, 2010; Clark *et al.*, 2014; Pollock *et al.*, 2014; Thorson *et al.*, 2015a).

Finally, species density is likely to be more similar on average for nearby locations than for geographically distant sites (termed ‘spatial autocorrelation’). Spatial autocorrelation in species density is likely to arise whenever an important but unobserved driver of species distribution is itself spatially autocorrelated (Dormann, 2007), or when dispersal patterns cause synchronous variation in density for nearby components of a population (Earn *et al.*, 2000). Spatial autocorrelation can bias estimates of habitat associations, inflate Type-I errors for statistical tests of habitat associations (Bahn & McGill, 2007) and decrease explanatory power for SDMs (Dormann, 2007). Ecologists have a growing ability to account for spatial autocorrelation in species density via geostatistical models and spatial statistics (Conn *et al.*, 2014; Thorson *et al.*, 2015b). In many cases, a simple linear or

quadratic relationship between a habitat predictor variable and population density may be a poor approximation to the impact of habitat on density (Harris, 2015). In these cases, a spatio-temporal model can be thought of as being ‘semi-parametric’, where measured habitat variables are used to account for simple habitat relationships and the spatio-temporal component accounts for remaining nonlinear and unmeasured habitat associations (Shelton *et al.*, 2014).

We identify a need for a joint dynamic species distribution model (JDSDM) that accounts for spatial autocorrelation in density for multiple species, as well as changes in spatial distributions over time. JDSDMs have previously been developed for site-level dynamics (e.g. Dorazio *et al.*, 2010), but these models have not generally included spatial autocorrelation. We envision that a JDSDM could be used for two major projects in community ecology. First, a JDSDM could be used to assess the degree to which species have similar or different spatio-temporal patterns (‘species ordination’). For example, classifying species based on similar spatio-temporal dynamics could be used to determine whether high-density species are useful as indicators of abundance trends for rare or poorly surveyed species. Second, a JDSDM could be used for community monitoring to estimate dominant trends in community abundance and whether trends are similar across spatial areas (‘community monitoring’; see Dorazio *et al.*, 2010). Community monitoring has increasing importance given that species distributions are likely to shift in unexpected ways due to human-caused climate change. Previous research suggests that jointly modelling density for multiple species is likely to be a more statistically efficient use of limited sampling data than single-species models (Dorazio *et al.*, 2006; Latimer *et al.*, 2009; Ovaskainen & Soininen, 2011; Ovaskainen *et al.*, 2015; Thorson *et al.*, 2015a), so community monitoring will likely be more efficient for detecting climate impacts than monitoring individual species.

We therefore develop a new spatial dynamic factor analysis (SDFA) model and propose its use as a JDSDM. SDFA estimates one or more factors, where each factor represents a variable that is not directly observed but which contributes to the distribution of each species in the community. SDFA then approximates the log-density of each species at any given site and time as a linear combination of those factors. Spatial variation in each factor is estimated as a Gaussian random field, and each factor evolves over time following a simple density-dependent process. In the following, we use two case studies to demonstrate the use of SDFA in species ordination and to identify large-scale patterns in community dynamics. The first involves 33 years of data for 10 numerically dominant, bottom-associated species in the Bering Sea. This case study shows that a JDSDM is able to distinguish broad-scale spatial partitioning in the fish and invertebrate community, and also captures recent distributional changes caused by an intrusion of cold waters (termed the ‘cold pool’). The second case-study involves 16 biweekly samples of 63 butterfly species in Ohio during 2010. This case study demonstrates that seasonal patterns in density can be

reconstructed for species with as few as 10 observations, while also showing that species within the same genus are significantly more correlated than otherwise unrelated species. We conclude with research recommendations that can lead to rapid, generic monitoring of community spatio-temporal dynamics and species similarity.

METHODS

A primer on dynamic factor analysis

Before describing S DFA, we first present a short overview of dynamic factor analysis (DFA). DFA is a dimension-reduction technique designed specifically for sequential observations of a variable (e.g. abundance) for different units of analysis (e.g. subpopulations of a species). Although ecologists may be more familiar with rank-reduction using principal components analysis or other multivariate techniques, these typically do not incorporate information about the time-series ordering of observations from each unit. There is a long history of using DFA in the analyses of multivariate time-series data in economics (Harvey, 1990) and medicine (Molenaar, 1985) but it is relatively new to ecology (Zuur *et al.*, 2003).

The general motivation for DFA is as follows. If we had only a few time series (e.g. abundance for one of several subpopulations for a species), we might choose to model each of them as if they follow entirely independent dynamics over time. However, as the number of time series gets much larger, some of them will be likely show similar temporal patterns due to shared features of the environment (e.g. temperature) that tend to synchronize dynamics (e.g. similar population responses to an environmental driver). Therefore, we can model N time series as a linear combination of M latent variables using DFA, where $M \ll N$. These latent variables can be thought of as unmeasured or unknown environmental drivers of ecological processes. Recent applications of DFA have included identifying three dominant patterns in the abundance of 34 Pacific salmon stocks from North America and Asia (Stachura *et al.*, 2014) and detecting important differences in the sensitivity of 80 boreal streams to variation in summer air temperature (Lisi *et al.*, 2015).

Introducing S DFA

We next develop a new S DFA model that provides a parsimonious approach to JDSDM. Here and throughout, we use JDSDM to refer to any model that includes spatial and temporal variation in occupancy or density of multiple species, and S DFA to refer to our specific hierarchical model for this JDSDM task. We also use the terms dynamic SDM and joint SDM, respectively, to refer to SDMs with temporal dynamics for a single species or multispecies models without temporal dynamics.

S DFA simultaneously fits to data for multiple species at different sites and time intervals using one or more latent spatial variables (termed ‘factors’ in our model, in analogy to DFA). Latent variable models are seeing increased use in

community ecology as a sparse method for analysing correlations among multiple species (Ovaskainen *et al.*, 2015; Thorson *et al.*, 2015a; Warton *et al.*, 2015). Each factor, ψ , is a function that returns a value (associated with positive or negative density for one or more species) at any location s within the spatial domain ($s \in D \in \mathcal{R}^2$, where D is the domain, indexed by latitude/longitude or any other appropriate two-dimensional measure), and any time interval t within the period of interest ($t \in \{1, 2, \dots, T\}$, where T is the maximum time interval, see Table 1 for a definition of all parameters).

Data for each species p are assumed to arise as a function of log-density θ_p for that species:

$$c_p(s, t) \sim g(\exp(\theta_p(s, t))) \quad (1)$$

where $c_p(s, t)$ is data for species p at location s and time t , and g is a measurement process (i.e. a Bernoulli distribution for presence-absence data, or a Poisson distribution for count data, etc.). The log-density $\theta_p(s, t)$ at site s and time t of each species p is modelled as a linear combination of n_j factors:

$$\theta_p(s, t) = \sum_{j=1}^{n_j} L_{p,j} \psi_j(s, t) + \sum_{k=1}^{n_k} \gamma_{k,p} x_k(s, t) \quad (2)$$

where the loadings matrix \mathbf{L} represents the association $L_{p,j}$ between factor j and species p , and $\gamma_{k,p}$ is the linear effect of the k th of n_k covariates, $x_k(s, t)$, for each site s and time t on log-expected counts for species p . For the following case studies, we specify that $x_k(s, t) = 1$ for all observations and times (i.e. it represents an intercept governing differences in expected counts among species), but future studies could explore the impact of additional covariates on model performance. Given that we do not include any measured covariates, dynamic factors $\psi_j(s, t)$ are used to capture all spatial and temporal variation in each species.

The j th dynamic factor follows a simple autocorrelated process over time:

$$\psi_j(s, t+1) = \rho_j \psi_j(s, t) + \omega_j(s) + \zeta_j(s, t) \quad (3)$$

where ρ_j is the strength of autocorrelation for that factor (ranging from -1 to 1 , where $\rho = 0$ implies independent fluctuations around the expected log-density, and $\rho = 1$ implies a random walk with no tendency to revert to its long-term mean), $\omega_j(s)$ represents spatial variation in density at site s , and $\zeta_j(s, t)$ represents otherwise unexplained spatio-temporal variation in dynamics for factor j . Each factor therefore follows a spatial Gompertz process (Thorson *et al.*, 2015b), where ρ can be interpreted as the strength of density dependence. Spatial variation ω_j is represented as a Gaussian random field:

$$\boldsymbol{\omega}_j \sim \text{MVN}(\mathbf{0}, \boldsymbol{\Sigma}_{\omega}) \quad (4)$$

Table 1 List of symbols used in describing the spatial dynamic factor analysis model.

Symbol	Description	Dimension
Variables		
Ψ	Dynamic factor	$n_s \times n_j \times n_t$
Θ	Expected log-density from dynamic factors	$n_s \times n_p \times n_t$
E	Spatio-temporal variation	$n_s \times n_j \times n_t$
Ω	Spatial variation	$n_s \times n_j$
L	Loadings matrix	$n_p \times n_j$
H	Rotation matrix	$n_j \times n_j$
X	Measured environmental variables	$n_i \times n_k$
C	Count data for all species, sites, and time periods	n_i
ρ	Autocorrelation in spatio-temporal variation	1
χ	Ratio of spatio-temporal and spatial variance	1
δ	Lognormal overdispersion	n_i
γ	Effect of covariates	n_k
σ_δ	Standard deviation of overdispersion	n_p
ϕ	Ratio of initial and median value for dynamic factors	n_j
τ_{space}	Magnitude of spatial variation	1
τ_{time}	Magnitude of spatio-temporal variation	1
κ	Distance of spatial correlation	1
η	Overdispersion in observations (used for count data)	n_i
σ	Magnitude of overdispersion in observations (used for count data)	n_p
ν	Measurement error parameters (used for zero-inflated continuous-valued data)	$n_p \times 2$
Dimensions		
n_t	Number of time intervals	1
n_p	Number of species	1
n_s	Number of sites with available data	1
n_j	Number of dynamic factors	1
n_k	Number of covariates	1
n_i	Number of observations	1
Indices		
t	Time interval	1
p	Species	1
s	Site with available data	1
j	Factor	1
k	Covariate	1
i	Observation	1

where the covariance in average density Σ_ω is assumed to be higher for nearby locations than for geographically distant locations. We specifically model the relationship between geographical distance between location s and $s+h$ (i.e. where $|h|$ is the distance between locations) using a Matérn function:

$$\begin{aligned} & \text{Var}(\omega_j(s), \omega_j(s+h)) \\ &= \frac{1}{2^{v-1} \Gamma(v) \tau_\omega^2} (\kappa_\omega |h|)^v K_v(\kappa_\omega |h|) = f(|h|, \kappa_\omega, \tau_\omega^2) \end{aligned} \quad (5)$$

where κ_ω governs the range over which covariance declines as a function of distance $|h|$, v governs the smoothness of the covariance matrix (we assume that $v=1$ in the following) and τ_ω governs the marginal variance of spatial variation. The covariance in spatio-temporal variation ξ_j is defined similarly:

$$\xi_j \sim \text{MVN}(\mathbf{0}, \Sigma_\xi \otimes \mathbf{I}) \quad (6)$$

where covariance Σ_ξ is calculated given range parameter κ_ξ and precision τ_ξ and \mathbf{I} is an n_t by n_t identity matrix (where n_t is the number of modelled time intervals).

Each factor ψ_j is initialized given the assumption that Ψ_j starts away from its long-term stationary distribution:

$$\psi_j(s, 1) = \phi_j + \frac{\omega_j(s)}{1-\rho_j} + \xi_j(s, t) \quad (7)$$

where $\omega_j(s)/(1-\rho_j)$ is the median of the stationary distribution for this factor, and ϕ_j is the difference between the initial value and the median of its stationary distribution. This initial condition allows us to reparameterize dynamics for each factor in a way that is more computationally efficient

(see [Thorson et al. \(2015b\)](#) or Appendix S1 in the Supporting Information for details).

Finally, observation of the density $c_p(s, t)$ of species p at site s in year t is assumed to follow a simple measurement process. In the following case studies, we use both counts (i.e. integer-valued data) and catch per unit effort (i.e. non-negative real-valued data). For count data, we propose an overdispersed lognormal Poisson process:

$$\Pr(C=c_p(s, t)) = \text{Poisson}\left(C; \lambda_p(s, t) \exp(\eta_p(s, t))\right) \quad (8a)$$

where mean count $\lambda_p(s, t) = \exp(\theta_p(s, t))$ and $\eta_p(s, t) \sim N(0, \sigma_p^2)$ represents lognormal overdispersion with variance σ_p^2 for species p . For catch per unit effort data, we use a zero-inflated gamma distribution, which describes the probability of the probability density function (PDF) for positive catches with an additional probability mass at zero (i.e. the probability of not encountering species p):

$$\Pr(C=c_p(s, t)) = \begin{cases} \exp(-v_{p,2}\lambda_p(s, t)) & \text{if } C=0 \\ (1 - \exp(-v_{p,2}\lambda_p(s, t))) \text{Gamma}\left(C; v_{p,1}^{-2}, \frac{\lambda_p(s, t)}{1 - \exp(-v_{p,2}\lambda_p(s, t))} v_{p,1}^2\right) & \text{if } C > 0 \end{cases} \quad (8b)$$

where $\text{Gamma}(C; x, y)$ is the PDF of a gamma distribution with shape x and scale y , $v_{p,1}$ is the coefficient of variation for positive catches for species p and $v_{p,2}$ controls the relationship between the probability of encountering zero individuals and predicted density for species p , such that probability of not encountering a species ($C=0$) is identical to a Poisson distribution with intensity $v_{p,2}\lambda_p(s, t)$. We here use the same linear prediction $\lambda_p(s, t)$ to control positive catch rates and the probability of encounter, but future research could explore more detailed models for the latter ([Martin et al., 2005](#)). We also envision future research exploring alternative sampling data including presence-absence or repeated-measures sampling (e.g. [Yamaura et al., 2012](#)).

Estimation and interpretation

Parameters for the generic spatial dynamic factor analysis model are not uniquely identifiable without further conditions. We therefore impose constraints on the form of the loadings matrix \mathbf{L} , and specify that the marginal variance of each factor $\text{Var}(\psi_j)$ is one ([Harvey, 1990](#); [Zuur et al., 2003](#); [Thorson et al., 2015a](#)), as explained in Appendix S2. Given these two conditions, the covariance between log-density of two species (labelled $p1$ and $p2$) at a given site and time can be calculated as:

$$\text{Var}(\theta_{p1}(s, t), \theta_{p2}(s, t)) = \sum_j L_{p1,j} L_{p2,j} \quad (9)$$

This relationship has been noted previously for joint SDMs ([Pollock et al., 2014](#); [Thorson et al., 2015a](#); [Warton et al., 2015](#)), and can be generalized to calculate the covariance between species at different times and/or sites (see, e.g., [Ovaskainen et al., 2016](#)).

Given this model and constraints, all fixed effects can in theory be uniquely identified. In the following, the set of fixed effects includes density dependence ρ (we assume that $\rho_j = \rho$), initial condition ϕ_j , variance ratio χ (used to calculate τ_ω and τ_ξ , and assumed to be constant among factors), range for spatial variation κ_ω , range for spatio-temporal variation κ_ξ , measurement error

parameters \mathbf{v} , and loadings matrix \mathbf{L} . We treat spatial variation $\boldsymbol{\omega}_j$ and spatio-temporal variation $\boldsymbol{\xi}_j$ (used to calculate $\boldsymbol{\xi}_j$) as random effects for each factor j . Finally, the lognormal Poisson distribution (used for applications involving count data) involves treating overdispersion $\boldsymbol{\eta}$ as a random effect.

We estimate fixed effects by identifying the value that maximizes the marginal likelihood function. This is accomplished using the following three steps:

1. We compute the joint likelihood of the data and random effects. The joint likelihood is calculated as the product of the probability of the data (equations 7a & 7b) and the probability of the dynamic factors (equation 3 and 5).
2. We then use the Laplace approximation ([Skaug & Fournier, 2006](#)) to approximate the marginal likelihood, obtained when integrating the joint likelihood with respect to random effects ($\boldsymbol{\omega}_j$, $\boldsymbol{\xi}_j$ and $\boldsymbol{\eta}$).
3. Finally, we use a nonlinear optimizer to identify the values of fixed effects that maximizes the marginal likelihood function.

Steps 1 and 2 are implemented using Template Model Builder (TMB, [Kristensen et al., in press](#); [Kristensen, 2014](#)), which computes gradients of the joint and marginal likelihoods using automatic differentiation techniques. Step 3 is done in the R statistical environment (R Core Team, 2014) using gradients provided by TMB in Step 2. After identifying the maximum likelihood estimates of fixed effects, we predict random effects (e.g. the value of factors $\psi_j(s, t)$) via empirical Bayes. To aid computational efficiency, we also use a stochastic partial differential equation approach to approximate the probability of Gaussian random fields (i.e. when computing the joint likelihood in Step 1 using equations 3 and 5; [Lindgren et al. 2011](#); [Thorson et al., 2015b](#)). Parameter estimation is feasible on a laptop using one to six factors in a matter of hours. The time required to estimate parameters follows a close to linear increase with increasing sites, years and species, and a faster than linear increase with increasing number of factors. We hypothesize that future developments (i.e. regarding spatial approximations or parallel processing) will lead to increased computational speed.

Table 2 List of species (with common and scientific name) used in each case study, along with 'species number' used to reference species in later figures.

Species number	Case study 1: interannual dynamics of Bering Sea demersal community			Case study 2: within-season dynamics of Ohio butterfly assemblage		
	Scientific name	Common name	No. of encounters (n = 12,210 samples)	Scientific name	Common name	No. of encounters (n = 1132 samples)
1	<i>Chionoecetes bairdi</i>	Tanner crab	7687	<i>Anatrytone logan</i>	Delaware skipper	19
2	<i>Chionoecetes opilio</i>	Snow crab	8995	<i>Ancyloxypha numitor</i>	Least skipper	221
3	<i>Gadus chalcogrammus</i>	Walleye pollock	11,786	<i>Asterocampa celtis</i>	Hackberry emperor	78
4	<i>Gadus macrocephalus</i>	Pacific cod	11,682	<i>Asterocampa clyton</i>	Tawny emperor	20
5	<i>Hippoglossoides elassodon</i>	Flathead sole	9228	<i>Battus philenor</i>	Pipeline swallowtail	39
6	<i>Hippoglossus stenolepis</i>	Pacific halibut	8253	<i>Boloria bellona</i>	Meadow fritillary	67
7	<i>Limanda aspera</i>	Yellowfin sole	8297	<i>Celastrina ladon</i>	Spring/summer azure	524
8	<i>Platichthys stellatus</i>	Starry flounder	1591	<i>Cercyonis pegala</i>	Common wood-nymph	190
9	<i>Pleuronectes quadrituberculatus</i>	Alaska plaice	8284	<i>Chlosyne nycteis</i>	Silvery checkerspot	27
10	<i>Podothecus accipenserinus</i>	Sturgeon poacher	6772	<i>Colias eurytheme</i>	Orange sulphur	583
11				<i>Colias philodice</i>	Clouded sulphur	629
12				<i>Cyllopsis gemma</i>	Gemmed satyr	16
13				<i>Danaus plexippus</i>	Monarch	483
14				<i>Enodia anthedon</i>	Northern pearly-eye	64
15				<i>Epargyreus clarus</i>	Silver-spotted skipper	476
16				<i>Erynnis baptisiae</i>	Wild indigo duskywing	126
17				<i>Erynnis brizo</i>	Sleepy duskywing	13
18				<i>Erynnis horatius</i>	Horace's duskywing	42
19				<i>Erynnis juvenalis</i>	Juvenal's duskywing	34
20				<i>Euphydryas phaeton</i>	Baltimore checkerspot	10
21				<i>Euphyes vestris</i>	Dun skipper	43
22				<i>Eurema lisa</i>	Little yellow	40
23				<i>Eurema nicippe</i>	Sleepy orange	11
24				<i>Eurytides marcellus</i>	Zebra swallowtail	58
25				<i>Everes comyntas</i>	Eastern tailed-blue	455
26				<i>Hermeuptychia sosybius</i>	Carolina satyr	11
27				<i>Hylephila phyleus</i>	Fiery skipper	44
28				<i>Junonia coenia</i>	Common buckeye	358
29				<i>Libytheana carinenta</i>	American snout	53
30				<i>Limenitis archippus</i>	Viceroy	228
31				<i>Limenitis arthemis astyanax</i>	Red-spotted purple	241
32				<i>Lycaena hyllus</i>	Bronze copper	13
33				<i>Lycaena phlaeas</i>	American copper	44
34				<i>Megisto cymela</i>	Little wood satyr	224
35				<i>Nymphalis antiopa</i>	Mourning cloak	111
36				<i>Papilio glaucus</i>	Eastern tiger swallowtail	462
37				<i>Papilio polyxenes</i>	Black swallowtail	289
38				<i>Papilio troilus</i>	Spicebush swallowtail	279
39				<i>Phoebis sennae</i>	Cloudless sulphur	16
40				<i>Pholisora catullus</i>	Common sootywing	32
41				<i>Phyciodes tharos</i>	Pearl crescent	786
42				<i>Pieris rapae</i>	Cabbage white	921
43				<i>Poanes hobomok</i>	Hobomok skipper	73
44				<i>Poanes viator</i>	Broad-winged skipper	15
45				<i>Poanes zabulon</i>	Zabulon skipper	102
46				<i>Polites mystic</i>	Long dash	24

TABLE 2. Continued

Case study 1: interannual dynamics of Bering Sea demersal community			Case study 2: within-season dynamics of Ohio butterfly assemblage			
Species number	Scientific name	Common name	No. of encounters ($n = 12,210$ samples)	Scientific name	Common name	No. of encounters ($n = 1132$ samples)
47				<i>Polites origenes</i>	Crossline skipper	25
48				<i>Polites peckius</i>	Peck's skipper	263
49				<i>Polites themistocles</i>	Tawny-edged skipper	57
50				<i>Polygonia comma</i>	Eastern comma	201
51				<i>Polygonia interrogationis</i>	Question mark	255
52				<i>Pompeius verna</i>	Little glassywing	73
53				<i>Pyrgus communis</i>	Common checkered-skipper	51
54				<i>Satyrrium calanus</i>	Banded hairstreak	16
55				<i>Satyrodes appalachia</i>	Appalachian brown	28
56				<i>Satyrodes eurydice</i>	Eyed brown	11
57				<i>Speyeria cybele</i>	Great spangled fritillary	357
58				<i>Strymon melinus</i>	Gray hairstreak	101
59				<i>Thymelicus lineola</i>	European skipper	64
60				<i>Vanessa atalanta</i>	Red admiral	358
61				<i>Vanessa cardui</i>	Painted lady	56
62				<i>Vanessa virginiensis</i>	American lady	51
63				<i>Wallengrenia egeremet</i>	Northern broken dash	55

Similar to conventional factor analysis, the resulting estimates of loadings \mathbf{L} and factors $\psi_j(n, t)$ can be rotated to ease interpretation. We therefore calculate a linear transformation matrix \mathbf{H} , and then interpret $\mathbf{L}^* = \mathbf{L}\mathbf{H}$ and $\Psi^* = \Psi\mathbf{H}^{-1}$. We specifically propose a new transformation matrix \mathbf{H} , which is designed to ensure that rotated Factor 1 explains the maximum proportion of total variance, Factor 2 explains the next highest proportion of total variance, and so forth (see Appendix S3). Hereafter, we refer to the loadings matrix and dynamic factors after transformation unless otherwise noted.

One advantage of SDFA is that it is estimated using maximum likelihood techniques, and therefore the number of factors (and other modelling decisions) can be informed using the Akaike information criterion (AIC) or other model selection techniques. In practice, however, we find that AIC favours the selection of a large number of factors (i.e. as many factors as species in some cases), where many of these factors explain a very small proportion of total variance. Therefore, model selection using AIC becomes impractical for a model involving many species. We use an alternative strategy for selecting the number of factors in the following case studies. Specifically, we estimate the SDFA model using one and two factors, and then successively increase the number of factors until the final factor explains less than 5% of total explained variance. This strategy is intended to allow

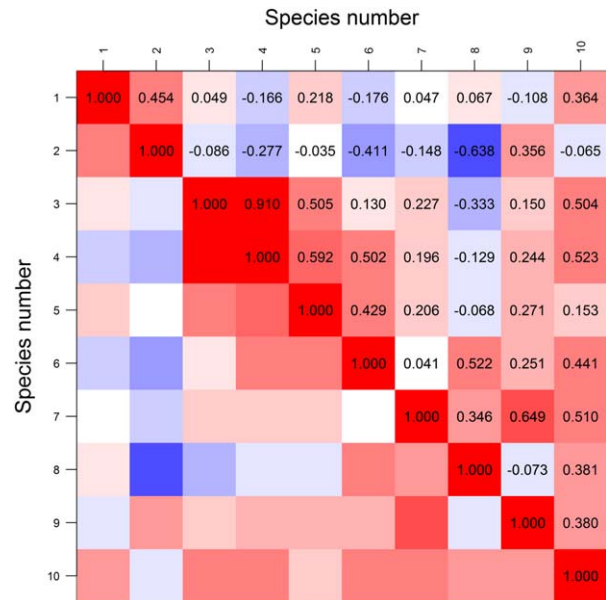


Figure 1 Estimated correlation in spatiotemporal densities among species, $\text{Corr}(\psi_i, \psi_j)$, for species i and j , in the first case study ('among-year dynamics of Bering Sea demersal community') where species are labelled by number (see Table 2 for names), red is a positive correlation (with a correlation of 1.0 on the diagonal) and blue is a negative correlation.

analysis of very large communities, while only adding factors that explain a biologically significant portion of community variance.

Case study examples

To demonstrate the usefulness of S DFA for estimating species similarity and identifying broad patterns in community spatio-temporal dynamics, we present results for two case study applications that differ substantially in taxa, number of species, spatial scale and temporal scale. The first case study demonstrates a smaller subset of important species at large spatial and temporal scales, while the second demonstrates the analysis of communities with a large number of species at fine spatial and temporal scales. In each case study, we use a spherical projection based on latitude and longitude to compute distances among sites (Lindgren *et al.*, 2011).

Example 1: Bering Sea demersal community

Our first case study analyses data from annual bottom trawl surveys of the eastern Bering Sea during summer from 1982 to 2014. This survey was conducted by the Alaska Fisheries Science Center with minimal changes in survey design over this period, and consisted of about 375 bottom trawl tows per year. Each tow was on the bottom for about 30 min and data collection involved enumerating each species of finfish and invertebrate in the catch. This survey provides a synoptic picture of the demersal community of the Bering Sea. The Bering Sea is often classified into three biogeographical regions: the inner (0–50 m depth), middle (50–100 m depth) and outer (100–200 m depth) domains (Schumacher & Stabenro, 1998). Some species are distributed broadly throughout the Bering Sea (e.g. *Gadus chalcogrammus*) while others have a more restricted spatial distribution (e.g. *Chionoecetes opilio* in the middle and outer domains). Species distribution is additionally influenced by the intrusion of cold waters south from the northern border of the Bering Sea (termed the ‘cold pool’; Wyllie-Echeverria & Wooster, 1998). For computational speed, we aggregate all surveyed locations to 100 ‘sites’ distributed throughout the Bering Sea, where the locations of these sites are determined by a *k*-means algorithm. Model exploration suggests that increasing spatial resolution (i.e. by aggregating locations to a greater number of ‘sites’) has relatively little impact on parameter estimates. We also restrict analysis to the 10 most abundant species (by weight) observed in the demersal community (see Table 1) and, given that we analyse catches by weight, we use the delta-gamma distribution for measurement errors (equation 7b).

Example 2: Ohio butterfly assemblage

As a second case study, we analyse count data from 2010 regarding the distribution of butterflies at 58 sampled locations in Ohio. This state-wide butterfly monitoring programme, conducted by the Ohio Lepidopterist Society, consisted of a local volunteer at each location conducting repeated transect surveys using protocols based on those developed by Pollard (1977) and

utilized across North American and European butterfly monitoring programmes. All adult butterflies present at each site were counted approximately weekly during the period from 1 April to 31 October (Julian dates 91–304), although not every location was surveyed every week. These counts have previously been analysed to demonstrate the ‘flight curve’ for each species, i.e. the pattern of increase and subsequent decrease in counts for butterflies during a species’ flight period (Cayton *et al.*, 2015). Changes in the flight curve among years have been used in a range of ecological studies, for example to identify phenological changes caused by climate change (Roy & Sparks, 2000). We analyse counts for all 63 butterfly species that were encountered 10 or more times during 2010 (Table 1) and use a lognormal-Poisson distribution for measurement errors (equation 7a). S DFA analyses observations within discrete time periods, $t \in \{1, 2, \dots, T\}$, so we aggregate observations into 16 2-week ‘intervals’ from 1 April to 31 October.

Simulation experiment

We also conduct a simulation experiment intended to explore and validate the estimation properties of S DFA when confronted with small sample sizes. To do so, we simulate dynamics at 20 ‘sites’ over 20 years, where sites are randomly distributed within a 1×1 grid. Dynamics evolve following five factors, where each factor has a spatial scale of 0.25, a marginal standard deviation for spatial variation and spatio-temporal process error of 0.5, and where each factor is weakly density-dependent (i.e. $\rho = 0.8$) and starts in the first year with a small deviation away from its equilibrium (i.e. ϕ_j is drawn from a standard normal distribution). Similarly, each element of the 5-by-5 loadings matrix **L** is drawn from a standard normal distribution (i.e. each factor contributes variance drawn from a chi-squared distribution with five degrees of freedom). Each site is surveyed once per year, yielding one count of every species, site and year (2000 counts total). Counts arise from a lognormal Poisson distribution with a log-standard deviation of 0.1 (to account for overdispersion in the measurement process), and each species has an expected log-count of 1.0 (i.e. $\gamma_p = 1$). Code to replicate this simulation experiment or to implement S DFA for a different data set is provided as an R package on the first author’s website (https://github.com/James-Thorson/spatial_DFA).

RESULTS

Case study 1: among-year dynamics of Bering Sea demersal community

Analysing data from the Bering Sea demersal community, we find that the sixth factor adds less than 5% of total variance, so we proceed by interpreting the S DFA model with six factors. Given this model, S DFA illustrates three main groups (Fig. 1). The first involves *Gadus chalcogrammus* and *Gadus macrocephalus*, which have a high correlation (0.91). *Chionoecetes bairdi* and *Chionoecetes opilio* also have

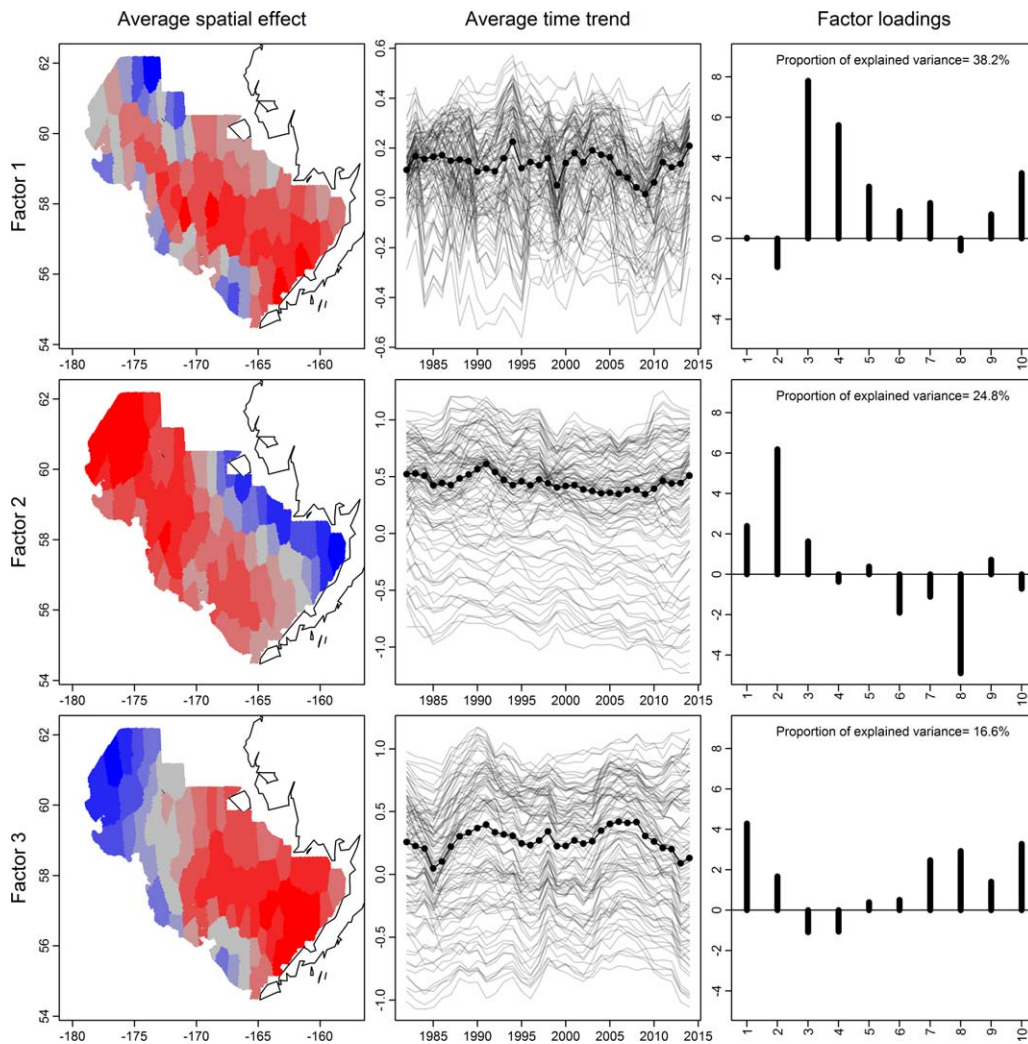


Figure 2 Summary of results for the dominant three dynamic factors in the first case study (‘among-year dynamics of Bering Sea demersal community’), including a depiction of average spatial effect (the median across years of the value of the factor at a given site, left column, where blue is a low value, grey is an intermediate value and red is a high value), the average temporal effect (middle column, where each grey line corresponds to a site, and the solid black line is the median value across sites for a given year) and estimated loadings for each species on each factor, where the proportion of total explained variance that is explained by each factor is listed in the upper left corner of each panel. We display the first three factors, which collectively explain *c.* 80% of the variance explained by all six estimated factors. When plotting spatial estimates, we extrapolate from knots to all locations within the sampling domain of the survey.

highest correlation with one another (0.46), and generally have a negative or close to zero correlation with all other species. Finally, *Limanda aspera* and *Pleuronectes quadrituberculatus* have a high correlation (0.65). These ten species represent eight different genera, and the average within-genus correlation (0.68) is higher than the among-genus correlation (0.15).

The first three factors capture 79% of total explained variance, and we present different summaries for these factors including the average spatial distribution, the average temporal trends and the loadings of each species on the dominant factors (Fig. 2). The spatial range (defined as the distance at which locations have a correlation of 10%, as calculated from estimates of κ_{ω} and κ_{ξ}) is larger for spatial

(1987 km) than spatio-temporal variation (343 km). This suggests that the Bering Sea has large differences in community structure from northern to southern boundaries, but that annual variation at a given site is only predictive of variation at nearby sites. Factor 1 (top row of Fig. 2) is highly associated with *G. chalcogrammus* and *G. macrocephalus*, and has weaker positive associations with *Hippoglossoides elassodon*, *Hippoglossus stenolepis*, *L. aspera* and *Podothecus accipenserinus*. This factor is highest at intermediate depths and the south-eastern shelf of the Bering Sea, and is lowest in the northern portion of the Bering Sea. This factor shows a drop in 2008 followed by an increase through 2013, and this trend is consistent with the abundance estimates from population dynamics models for these

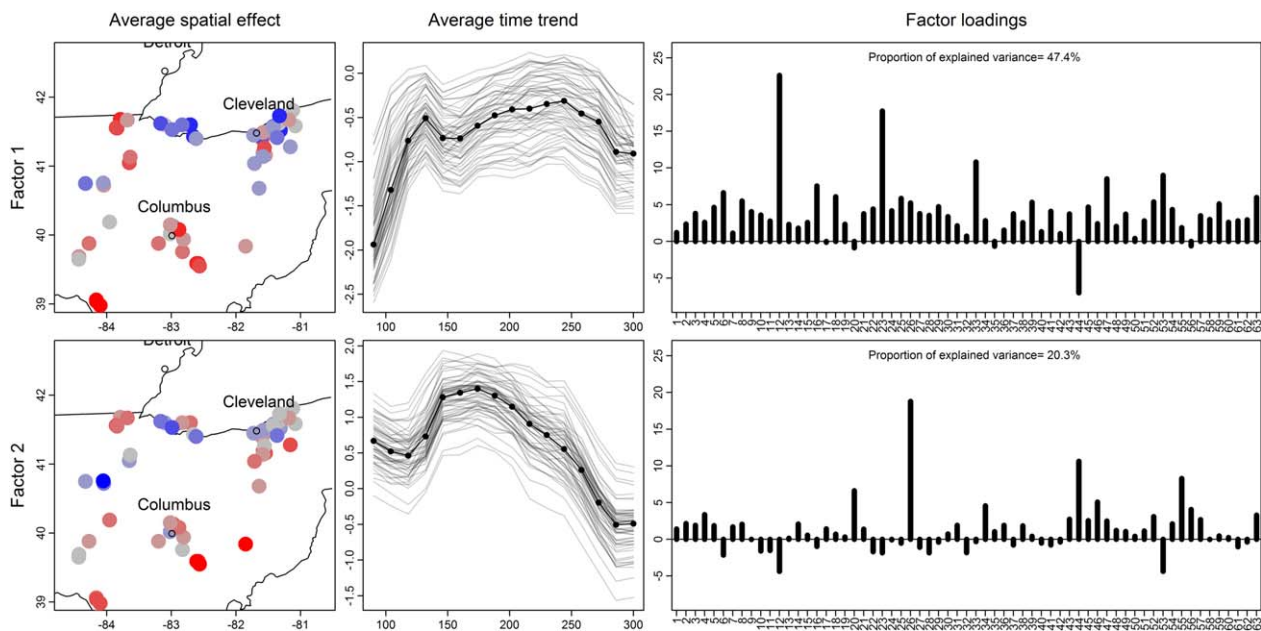


Figure 3 Summary of results for the dominant three dynamic factors in the first case study ('within-year dynamics of Ohio butterflies in 2010') (see caption to Fig. 2 for details). We display the first two factors, which collectively explain *c.* 65% of the variance explained by all six estimated factors. When plotting spatial estimates, we only plot estimates at knots because data do not arise from a designed survey.

species, where *G. chalcogrammus* and *G. macrocephalus* had distributions that were restricted by a large cold pool starting in 2008 (Aydin *et al.*, 2014). Factor 2 is positively associated with *C. bairdi* and *C. opilio* and negatively associated with *H. stenolepis* and *Platichthys stellatus*. It is highest in deep waters of the northern portion, and captures a previously documented 'environmental ratchet' (Orensanz *et al.*, 2004) in which the distribution of *C. opilio* contracted north during the early 1990s and subsequently did not fully recolonize the southern area of the survey. Factor 3 is positively associated with *C. bairdi*, *Limanda aspera*, *P. stellatus* and *Podothecus accipenserinus*, and is positive in the portion of the Bering Sea adjacent to the Aleutian Islands.

Case study 2: within-year dynamics of the butterfly community in Ohio

Analysing data regarding within-year dynamics of butterflies in Ohio, we find that the sixth factor adds less than 5% of total variance, and we therefore proceed by interpreting a model with six factors. This model estimates a positive correlation among most species (see Appendix S4). These 63 species represent 44 genera, and the average within-genus correlation (0.52) is higher than the average among-genus correlation (0.45). As a post hoc test, we estimated the difference and its standard error (0.072, SE = 0.036). A one-sided Wald test therefore indicates that the increased correlation for species in the same genus relative to other species pairs is statistically significant ($P = 0.023$).

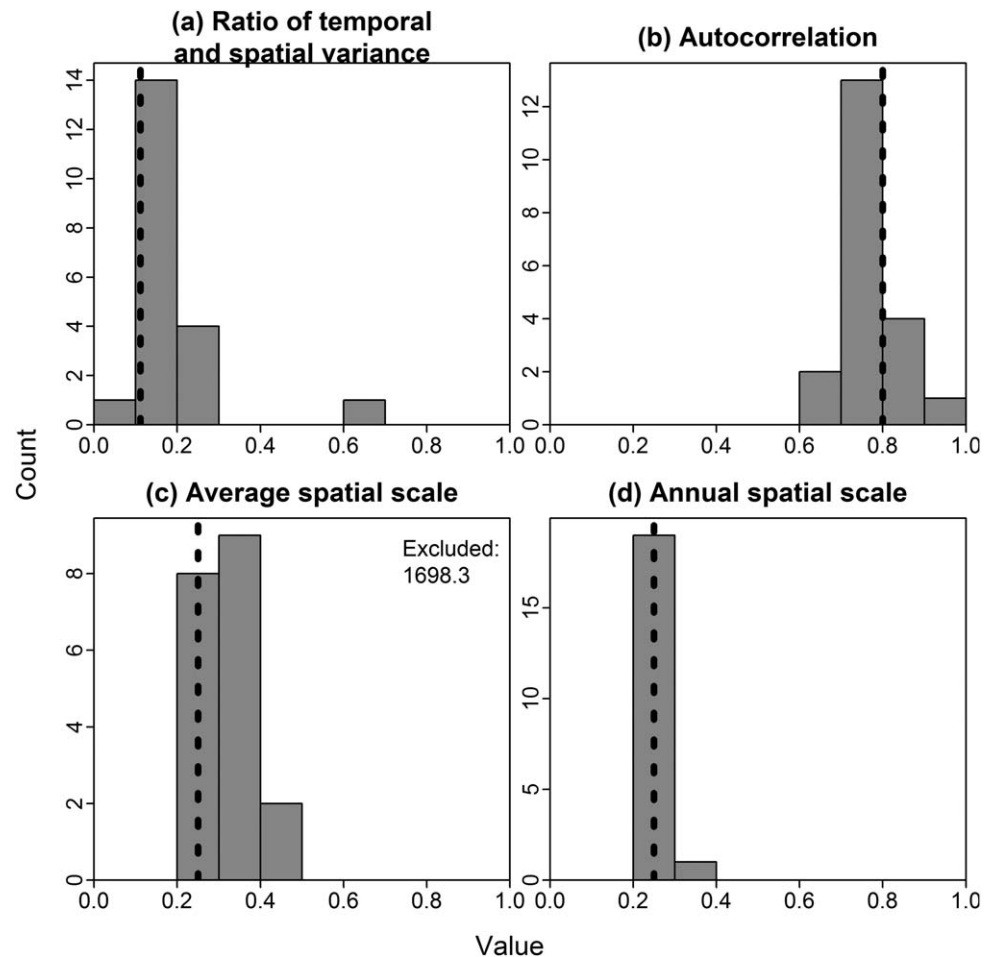
The first two factors explain 67% of total explained variance (Fig. 3). The spatial range is smaller for spatial

(14.7 km) than spatio-temporal variation (333.1 km), suggesting that factors account for fine-scale spatial variation (e.g. there are high- and low-density sites near Cleveland in north-east Ohio) but that changes over time are generally synchronous among sites. Factor 1 is positively associated with almost all species (the major exception being *Poanes viator*), and captures an increase and subsequent decrease in butterfly densities (with a broad peak between 150 and 250). Factor 2 is also strongly associated with many species but has a mix of positive and negative associations. It captures a declining trend in abundance during the summer, such that species with a positive association (e.g. species no. 34, *Megisto cymela*) have a peak in the late spring, while species with a negative association (e.g. species no. 53, *Pyrgus communis*) are predicted to peak in the late summer. For model validation, we also compare predictions of peak density from our analysis with flight curves reported by Belth (2012) in Illinois (see Appendix S5). This comparison illustrates that SDEFA is able to correctly predict narrow peaks in density (e.g. *Satyroides eurydice* with 11 occurrences, or *Euphydryas phaeton* with 10 occurrences) and broad peaks for other data-poor species (e.g. *Euphyes vestris*, with 43 occurrences). However, SDEFA also provides poor estimates in some cases (e.g. *Hermeuptchia sosybius*, with 11 occurrences, where it misses the earliest of three peaks reported in nearby Illinois).

Simulation experiment

Estimated parameters from the simulation experiment (Fig. 4) illustrate that the SDEFA model is able to accurately estimate parameters governing spatial and temporal variation.

Figure 4 Summary of simulation experiment testing the small-sample properties of the dynamic spatial factor analysis model, where each panel shows the true simulated value (dashed vertical line) and distribution of estimates for each simulation replicate (histogram). Panels show the ratio of temporal and spatial variance (λ), the temporal autocorrelation (ρ), the average spatial range (defined as the distance at which correlations drop to 10% as calculated from κ_{ω}) and the spatial range of spatio-temporal variance (calculated from κ_{ε}). In the top right portion of each panel we list an estimates that exceed the x -axis boundary of that panel.



In particular, the model can accurately estimate the degree of autocorrelation (0.8), the ratio of spatial and temporal variance (0.12), the spatial range of spatial variation ω (0.25, derived from κ_{ω}) and the spatial range of spatio-temporal variation ε (0.25, derived from κ_{ε}). However, we note that one replicate resulted in an estimate of a spatial scale for spatial variation that approached infinity, indicating that the model in this replicate estimated essential zero spatial variation ($\omega = 0$).

Comparison of the estimated and true correlation in density among species, $\text{Corr}(\psi_i, \psi_j)$, also illustrates that the SDFA is able to precisely identify similarities and differences among species, given the magnitude of data available in the simulation experiment (Fig. 5). In particular, a plot of the estimated and true correlation is generally on the 1:1 line, and this 1:1 line explains nearly 90% of variation in the correlation among species.

DISCUSSION

In this study we have developed a SDFA model for use as a JDSDM, and used two case studies (involving different taxa, numbers of species and spatial and temporal scales) to show that SDFA is useful for species ordination. In particular, phylo-

genetically related species had greater similarity in spatio-temporal dynamics than unrelated species in both case studies (analogous to the conclusion using spatial factor analysis in [Thorson *et al.*, 2015a](#)). This result suggests that well-sampled species could be used as indicators for related species that are poorly sampled in each community. If this result holds for other communities (and all else being equal), we also expect that phylogenetically diverse communities will be more stable (i.e. have a lower variance in total abundance spatially and over time due to the portfolio effect; see [Doak *et al.*, 1998](#)) than communities composed of phylogenetically related species.

We have also demonstrated that SDFA can be used for community monitoring. In particular, our first case study identified a northward shift in bottom-associated fishes in the Bering Sea, where this recent shift coincides with a receding cold pool after its expansion in 2008. The second case study showed that seasonal dynamics could be predicted with reasonable accuracy even for species with as few as 10 observations. Many other taxa have shown responses to climate change through phenological shifts, leading to changes in their spatio-temporal distributions and correlations among species ([Root *et al.*, 2003](#)). Recent research suggests that bees ([Kerr *et al.*, 2015](#)), butterflies ([Parmesan *et al.*, 1999](#)) and marine

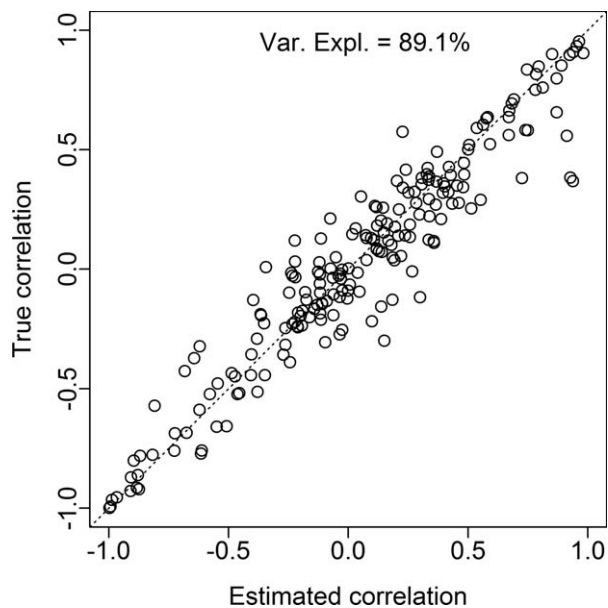


Figure 5 A scatterplot showing the estimated correlation in density among species, $\text{Corr}(\psi_i, \psi_j)$ for species i and j , and the true correlation, where each is calculated from the estimated and true loadings matrices $L_{p,j}$, respectively. The proportion of variance explained when regressing the true correlation on the estimated correlation is shown at the top.

fishes (Pinsky *et al.*, 2013), among other taxa, are already exhibit shifting ranges or phenology. We hypothesize that SDFA and other JDSDMs will have a growing role in identifying spatial and phenological shifts in ecological communities.

We envision several fruitful lines of future research regarding spatio-temporal community monitoring. Most obviously, future research could explore the benefits in precision or interpretation from the inclusion of measured covariates (as can be easily done in SDFA). Covariates may be particularly important for extrapolation, while our use of Gaussian random fields may be sufficient when interpolating among densely located sampling data (Bahn & McGill, 2007). We also recommend exploring the use of additional data types (e.g. presence–absence or repeated-measures sampling) when fitting JDSDMs to spatio-temporal community data. Finally, there is great need for determining whether ‘hotspots’ in species richness or density change substantially over time. Hotspots are frequently used in conservation efforts when planning spatial protection of harvested or imperilled species, and changes over time in the location of hotspots have substantial implications for the usefulness of these spatial protections (Piacenza *et al.*, 2015).

Recent multispecies occurrence models represent an alternative approach to estimation of community dynamics relative to covariates (Zipkin *et al.*, 2010; Iknayan *et al.*, 2014). These models generally focus on estimating species distributions using presence–absence data while explicitly accounting for detection biases that occur during sampling. Detection probability could similarly be estimated in SDFA by incorporating an alternative distribution for repeated sampling at a

given site and time (Royle & Dorazio, 2008). While these community modelling approaches allow for joint estimation of species occurrence/abundance across a landscape, they typically assume that unexplained variations in dynamics (‘process errors’) are independent among species. Our multivariate approach for estimating spatial correlation among species may allow JDSDMs to more efficiently use available data to model spatio-temporal patterns.

We envision a complementary role between phenomenological and mechanistic models for community dynamics, and an increased emphasis on mechanism could be incorporated in many ways. In particular, phylogenetic relatedness or similarity in functional traits could help inform estimates of species similarity. Covariance among species, $\text{Cov}(\psi_i, \psi_j)$, could be estimated as an explicit function of phylogenetic distance, in addition to residual covariance modelled via the loadings matrix (\mathbf{LL}^T). Increased emphasis on mechanism could also be incorporated into future JDSDMs by estimating a ‘species interaction matrix’ that is used to approximate density-dependent interactions among species (Ives *et al.*, 2003). However, we envision the need for substantial dimension reduction when estimating a species interaction matrix within a large community (Kissling *et al.*, 2012).

We conclude by offering guidance for future researchers interested in using SDFA as a JDSDM. Our software is publicly available, and can be applied to other data sets involving count (discrete) or density (continuous) data for multiple species at multiple sites and time periods. We recommend that parameters are estimated while sequentially increasing the number of factors (i.e. estimating one factor, then estimating two factors while starting parameters at their previous estimates, etc.) and stopping based on decreasing variance explained or model-selection criteria. We tested this process using communities with up to 100 species, sites and time intervals, and it is feasible to estimate parameters for these data sets on a scale of hours. We hypothesize that JDSDMs such as SDFA will continue to grow in importance for applied and community ecologists interested in either species ordination or spatio-temporal community monitoring.

ACKNOWLEDGEMENTS

We gratefully acknowledge the Ohio Lepidopterist Society (including Jerry Weidmann and Rick Ruggles) for providing access to the butterfly survey data, the many volunteers who conducted butterfly surveys, and the scientists who sampled demersal fish dynamics in the Bering Sea. We also thank Adrian Stier, Paul Conn, and two anonymous referees for comments on an earlier draft.

REFERENCES

- Aydin, K., Barbeaux, S., Barnard, D. *et al.* (2014) *Stock assessment and fishery evaluation report for the groundfish resources of the Bering Sea/Aleutian Islands Regions*, Alaska Fisheries Science Center, Anchorage, AK.

- Bahn, V. & McGill, B.J. (2007) Can niche-based distribution models outperform spatial interpolation? *Global Ecology and Biogeography*, **16**, 733–742.
- Belth, J.E. (2012) *Butterflies of Indiana: a field guide*. Indiana University Press, Bloomington, IN.
- Cayton, H.L., Haddad, N.M., Gross, K., Diamond, S.E. & Ries, L. (2015) Do growing degree days predict phenology across butterfly species? *Ecology*, **96**, 1473–1479.
- Clark, J.S., Gelfand, A.E., Woodall, C.W. & Zhu, K. (2014) More than the sum of the parts: forest climate response from joint species distribution models. *Ecological Applications*, **24**, 990–999.
- Conn, P.B., Johnson, D.S., Ver Hoef, J.M., Hooten, M.B., London, J.M. & Boveng, P.L. (2014) Using spatiotemporal statistical models to estimate animal abundance and infer ecological dynamics from survey counts. *Ecological Monographs*, **85**, 235–252.
- DeVisser, M.H., Messina, J.P., Moore, N.J., Lusch, D.P. & Maitima, J. (2010) A dynamic species distribution model of *Glossina* subgenus *Morsitans*: the identification of tsetse reservoirs and refugia. *Ecosphere*, **1**, art6.
- Doak, D.F., Bigger, D., Harding, E.K., Marvier, M.A., O'malley, R.E. & Thomson, D. (1998) The statistical inevitability of stability–diversity relationships in community ecology. *The American Naturalist*, **151**, 264–276.
- Dorazio, R.M. & Royle, J.A. (2005) Estimating size and composition of biological communities by modeling the occurrence of species. *Journal of the American Statistical Association*, **100**, 389–398.
- Dorazio, R.M., Royle, J.A., Söderström, B. & Glimskär, A. (2006) Estimating species richness and accumulation by modeling species occurrence and detectability. *Ecology*, **87**, 842–854.
- Dorazio, R.M., Kéry, M., Royle, J.A. & Plattner, M. (2010) Models for inference in dynamic metacommunity systems. *Ecology*, **91**, 2466–2475.
- Dormann, C.F. (2007) Effects of incorporating spatial autocorrelation into the analysis of species distribution data. *Global Ecology and Biogeography*, **16**, 129–138.
- Earn, D.J.D., Levin, S.A. & Rohani, P. (2000) Coherence and conservation. *Science*, **290**, 1360–1364.
- Elith, J. & Leathwick, J.R. (2009) Species distribution models: ecological explanation and prediction across space and time. *Annual Review of Ecology, Evolution, and Systematics*, **40**, 677–697.
- Harris, D.J. (2015) Generating realistic assemblages with a joint species distribution model. *Methods in Ecology and Evolution*, **6**, 465–473.
- Harvey, A.C. (1990) *Forecasting, structural time series models and the Kalman filter*. Cambridge University Press, Cambridge.
- Hooten, M.B. & Wikle, C.K. (2010) Statistical agent-based models for discrete spatio-temporal systems. *Journal of the American Statistical Association*, **105**, 236–248.
- Iknanan, K.J., Tingley, M.W., Furnas, B.J. & Beissinger, S.R. (2014) Detecting diversity: emerging methods to estimate species diversity. *Trends in Ecology and Evolution*, **29**, 97–106.
- Ives, A.R., Dennis, B., Cottingham, K.L. & Carpenter, S.R. (2003) Estimating community stability and ecological interactions from time-series data. *Ecological Monographs*, **73**, 301–330.
- Kerr, J.T., Pindar, A., Galpern, P., Packer, L., Potts, S.G., Roberts, S.M., Rasmont, P., Schweiger, O., Colla, S.R., Richardson, L.L., Wagner, D.L., Gall, L.F., Sikes, D.S. & Pantoja, A. (2015) Climate change impacts on bumblebees converge across continents. *Science*, **349**, 177–180.
- Kissling, W.D., Dormann, C.F., Groeneveld, J., Hickler, T., Kühn, I., McNerny, G.J., Montoya, J.M., Römermann, C., Schiffers, K., Schurr, F.M., Singer, A., Svenning, J.-C., Zimmermann, N.E. & O'Hara, R.B. (2012) Towards novel approaches to modelling biotic interactions in multispecies assemblages at large spatial extents. *Journal of Biogeography*, **39**, 2163–2178.
- Kristensen, K. (2014) TMB: general random effect model builder tool inspired by ADMB. <https://cran.r-project.org/web/packages/TMB/index.html>
- Kristensen, K., Nielsen, A., Berg, C.W., Skaug, H. & Bell, B.M. (2016) TMB: Automatic Differentiation and Laplace Approximation. *Journal of Statistical Software*, **70**, 1–21.
- Latimer, A.M., Banerjee, S., Sang Jr, H., Mosher, E.S. & Silander Jr, J.A. (2009) Hierarchical models facilitate spatial analysis of large data sets: a case study on invasive plant species in the northeastern United States. *Ecology Letters*, **12**, 144–154.
- Lindgren, F., Rue, H. & Lindström, J. (2011) An explicit link between Gaussian fields and Gaussian Markov random fields: the stochastic partial differential equation approach. *Journal of the Royal Statistical Society: Series B (Statistical Methodology)*, **73**, 423–498.
- Lisi, P.J., Schindler, D.E., Cline, T.J., Scheuerell, M.D. & Walsh, P.B. (2015) Watershed geomorphology and snow-melt control stream thermal sensitivity to air temperature. *Geophysical Research Letters*, **42**, 3380–3388.
- Martin, T.G., Wintle, B.A., Rhodes, J.R., Kuhnert, P.M., Field, S.A., Low-Choy, S.J., Tyre, A.J. & Possingham, H.P. (2005) Zero tolerance ecology: improving ecological inference by modelling the source of zero observations. *Ecology Letters*, **8**, 1235–1246.
- Merow, C., Laflour, N., Silander, J.A., Wilson, A.M. & Rubega, M. (2011) Developing dynamic mechanistic species distribution models: predicting bird-mediated spread of invasive plants across northeastern North America. *The American Naturalist*, **178**, 30–43.
- Molenaar, P.C. (1985) A dynamic factor model for the analysis of multivariate time series. *Psychometrika*, **50**, 181–202.
- Orensanz, J., Ernst, B., Armstrong, D.A., Stabeno, P. & Livingston, P. (2004) Contraction of the geographic range of distribution of snow crab (*Chionoecetes opilio*) in the eastern Bering Sea: an environmental ratchet? *California Cooperative Oceanic Fisheries Investigations Report*, **45**, 65–79.
- Ovaskainen, O. & Soininen, J. (2011) Making more out of sparse data: hierarchical modeling of species communities. *Ecology*, **92**, 289–295.

- Ovaskainen, O., Hottola, J. & Siitonen, J. (2010) Modeling species co-occurrence by multivariate logistic regression generates new hypotheses on fungal interactions. *Ecology*, **91**, 2514–2521.
- Ovaskainen, O., Abrego, N., Halme, P. & Dunson, D. (2015) Using latent variable models to identify large networks of species-to-species associations at different spatial scales. *Methods in Ecology and Evolution* doi: 10.1111/2041-210X.12501.
- Ovaskainen, O., Roy, D.B., Fox, R. & Anderson, B.J. (2016) Uncovering hidden spatial structure in species communities with spatially explicit joint species distribution models. *Methods in Ecology and Evolution*, **7**, 428–436.
- Parmesan, C., Ryrholm, N., Stefanescu, C., Hill, J.K., Thomas, C.D., Descimon, H., Huntley, B., Kaila, L., Kullberg, J., Tammaru, T. & others (1999) Poleward shifts in geographical ranges of butterfly species associated with regional warming. *Nature*, **399**, 579–583.
- Pearman, P.B., Guisan, A., Broennimann, O. & Randin, C.F. (2008) Niche dynamics in space and time. *Trends in Ecology and Evolution*, **23**, 149–158.
- Piacenza, S.E., Thurman, L.L., Barner, A.K., Benkwitt, C.E., Boersma, K.S., Cerny-Chipman, E.B., Ingeman, K.E., Kindinger, T.L., Lindsley, A.J., Nelson, J., Reimer, J.N., Rowe, J.C., Shen, C., Thompson, K.A. & Heppell, S.S. (2015) Evaluating temporal consistency in marine biodiversity hotspots. *PLoS One*, **10**, e0133301.
- Pinsky, M.L., Worm, B., Fogarty, M.J., Sarmiento, J.L. & Levin, S.A. (2013) Marine taxa track local climate velocities. *Science*, **341**, 1239–1242.
- Pollard, E. (1977) A method for assessing changes in the abundance of butterflies. *Biological Conservation*, **12**, 115–134.
- Pollock, L.J., Tingley, R., Morris, W.K., Golding, N., O'hara, R.B., Parris, K.M., Vesk, P.A. & McCarthy, M.A. (2014) Understanding co-occurrence by modelling species simultaneously with a joint species distribution model (JSDM). *Methods in Ecology and Evolution*, **5**, 397–406.
- Rassweiler, A., Costello, C., Hilborn, R. & Siegel, D.A. (2014) Integrating scientific guidance into marine spatial planning. *Proceedings of the Royal Society B: Biological Sciences*, **281**, 20132252.
- R Core Team (2014) *R: a language and environment for statistical computing*. R Foundation for Statistical Computing, Vienna, Austria.
- Root, T.L., Price, J.T., Hall, K.R., Schneider, S.H., Rosenzweig, C. & Pounds, J.A. (2003) Fingerprints of global warming on wild animals and plants. *Nature*, **421**, 57–60.
- Rota, C.T., Wikle, C.K., Kays, R.W., Forrester, T.D., McShea, W.J., Parsons, A.W. & Millspaugh, J.J. (2015) A two-species occupancy model accommodating simultaneous spatial and interspecific dependence. *Ecology*, **97**, 48–53.
- Roy, D.B. & Sparks, T.H. (2000) Phenology of British butterflies and climate change. *Global Change Biology*, **6**, 407–416.
- Royle, J.A. & Dorazio, R.M. (2008) *Hierarchical modeling and inference in ecology: the analysis of data from populations, metapopulations and communities*, 1st edn. Academic Press, London.
- Schumacher, J.D. & Stabeno, P.J. (1998) The continental shelf of the Bering Sea. *The Sea*, **11**, 789–822.
- Shelton, A.O., Thorson, J.T., Ward, E.J. & Feist, B.E. (2014) Spatial semiparametric models improve estimates of species abundance and distribution. *Canadian Journal of Fisheries and Aquatic Sciences*, **71**, 1655–1666.
- Skaug, H. & Fournier, D. (2006) Automatic approximation of the marginal likelihood in non-Gaussian hierarchical models. *Computational Statistics and Data Analysis*, **51**, 699–709.
- Soberón, J. (2007) Grinnellian and Eltonian niches and geographic distributions of species. *Ecology Letters*, **10**, 1115–1123.
- Stachura, M.M., Mantua, N.J., Scheuerell, M.D. & Bradford, M. (2013) Oceanographic influences on patterns in North Pacific salmon abundance. *Canadian Journal of Fisheries and Aquatic Sciences*, **71**, 226–235.
- Thorson, J.T., Scheuerell, M.D., Shelton, A.O., See, K.E., Skaug, H.J. & Kristensen, K. (2015a) Spatial factor analysis: a new tool for estimating joint species distributions and correlations in species range. *Methods in Ecology and Evolution*, **6**, 627–637.
- Thorson, J.T., Skaug, H.J., Kristensen, K., Shelton, A.O., Ward, E.J., Harms, J.H. & Benante, J.A. (2015b) The importance of spatial models for estimating the strength of density dependence. *Ecology*, **96**, 1202–1212.
- Warton, D.I., Blanchet, F.G., O'hara, R.B., Ovaskainen, O., Taskinen, S., Walker, S.C. & Hui, F.K. (2015) So many variables: joint modeling in community ecology. *Trends in Ecology and Evolution*, **30**, 766–779.
- Wyllie-Echeverria, T. & Wooster, W.S. (1998) Year-to-year variations in Bering Sea ice cover and some consequences for fish distributions. *Fisheries Oceanography*, **7**, 159–170.
- Yamaura, Y., Royle, J.A., Shimada, N., Asanuma, S., Sato, T., Taki, H. & Makino, S. (2012) Biodiversity of man-made open habitats in an underused country: a class of multispecies abundance models for count data. *Biodiversity and Conservation*, **21**, 1365–1380.
- Zipkin, E.F., Royle, J.A., Dawson, D.K. & Bates, S. (2010) Multi-species occurrence models to evaluate the effects of conservation and management actions. *Biological Conservation*, **143**, 479–484.
- Zuur, A.F., Tuck, I.D. & Bailey, N. (2003) Dynamic factor analysis to estimate common trends in fisheries time series. *Canadian Journal of Fisheries and Aquatic Sciences*, **60**, 542–552.

SUPPORTING INFORMATION

Additional Supporting Information may be found in the online version of this article at the publisher's web-site.

Appendix S1 Linear parameterization for each dynamic factor.

Appendix S2 Identifiability conditions.

Appendix S3 Transformation of loadings matrix and factors to aid interpretation.

Appendix S4 Estimated correlation among species in case study 2.

Appendix S5 Validation of estimated flight curves by comparison with independent reports.

BIOSKETCH

James Thorson is a statistical ecologist who is interested in estimating density dependence and multispecies interactions at large spatial scales using information from multiple data sources. He works with a wide range of taxa and biological systems, but always seeks to apply new methods to improve management of marine fishes.

Editor: Alberto Jiménez-Valverde